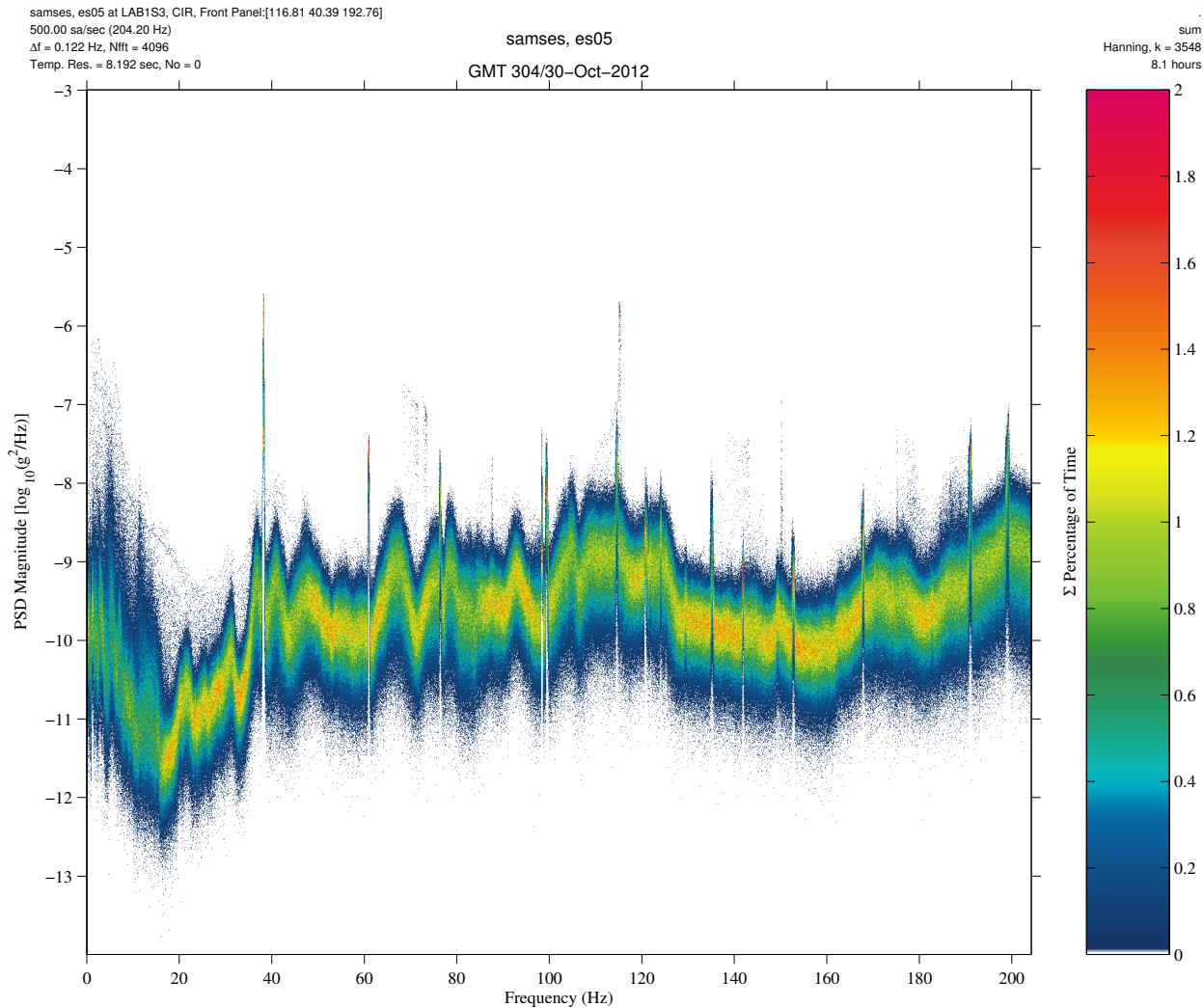


Passive Rack Isolation System (PaRIS) Qualify



Description	
Sensor	es05 500.00 sa/sec (204.2 Hz)
Location	LAB1S3, CIR, Front Panel
Plot Type	PCSA (Σ)

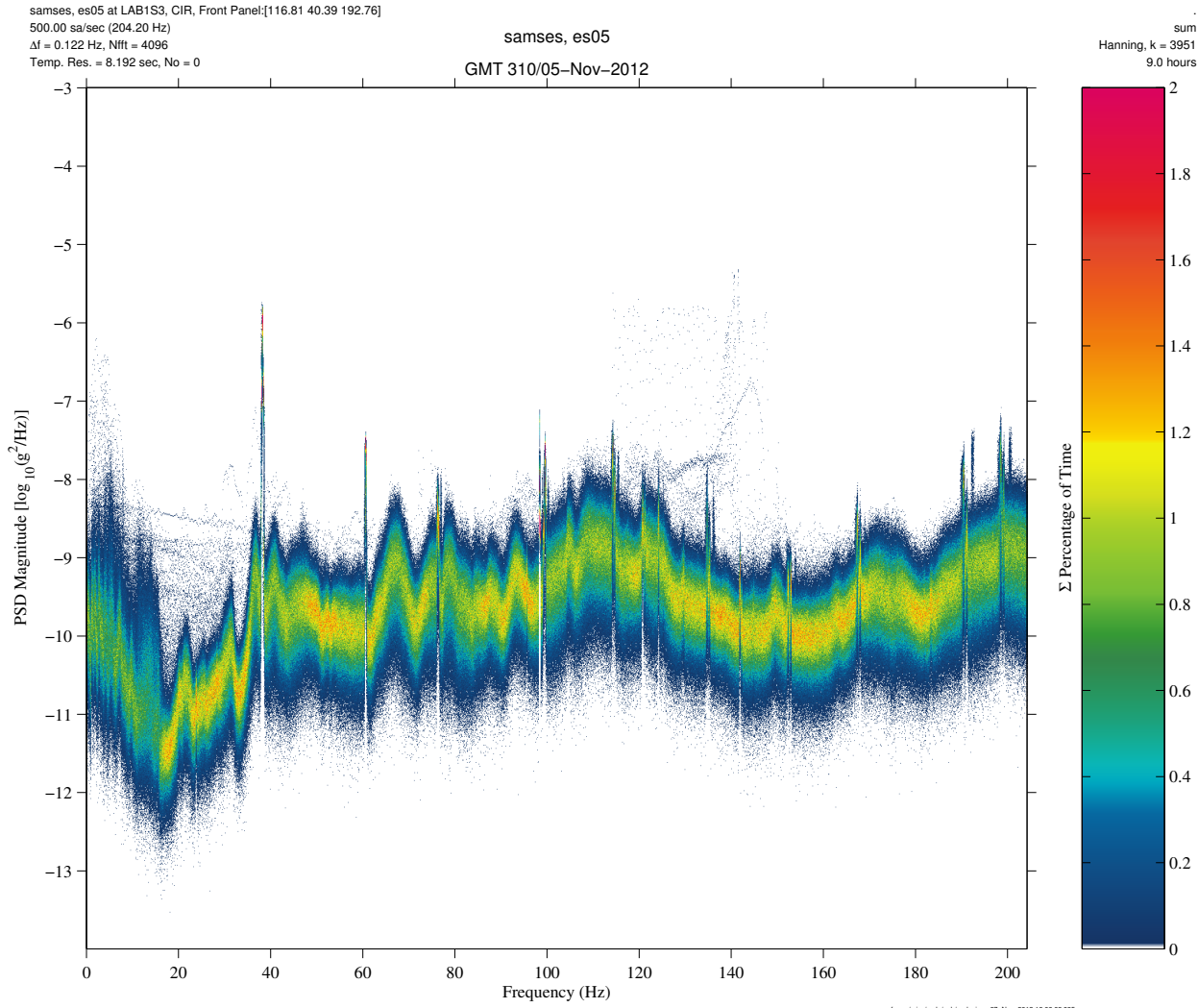
Notes:

- From the CIR Ops log, we know that this data set shows SAMS sensor measurements up to 200 Hz WITHOUT PaRIS.
- Note by comparing among first 4 pages of this PDF that there is spectral contrast below about 30 Hz or so.

Regime:	Vibratory
Category:	Equipment
Source:	PaRIS



Passive Rack Isolation System (PaRIS) Qualify



Description	
Sensor	es05 500.00 sa/sec (204.2 Hz)
Location	LAB1S3, CIR, Front Panel
Plot Type	PCSA (Σ)

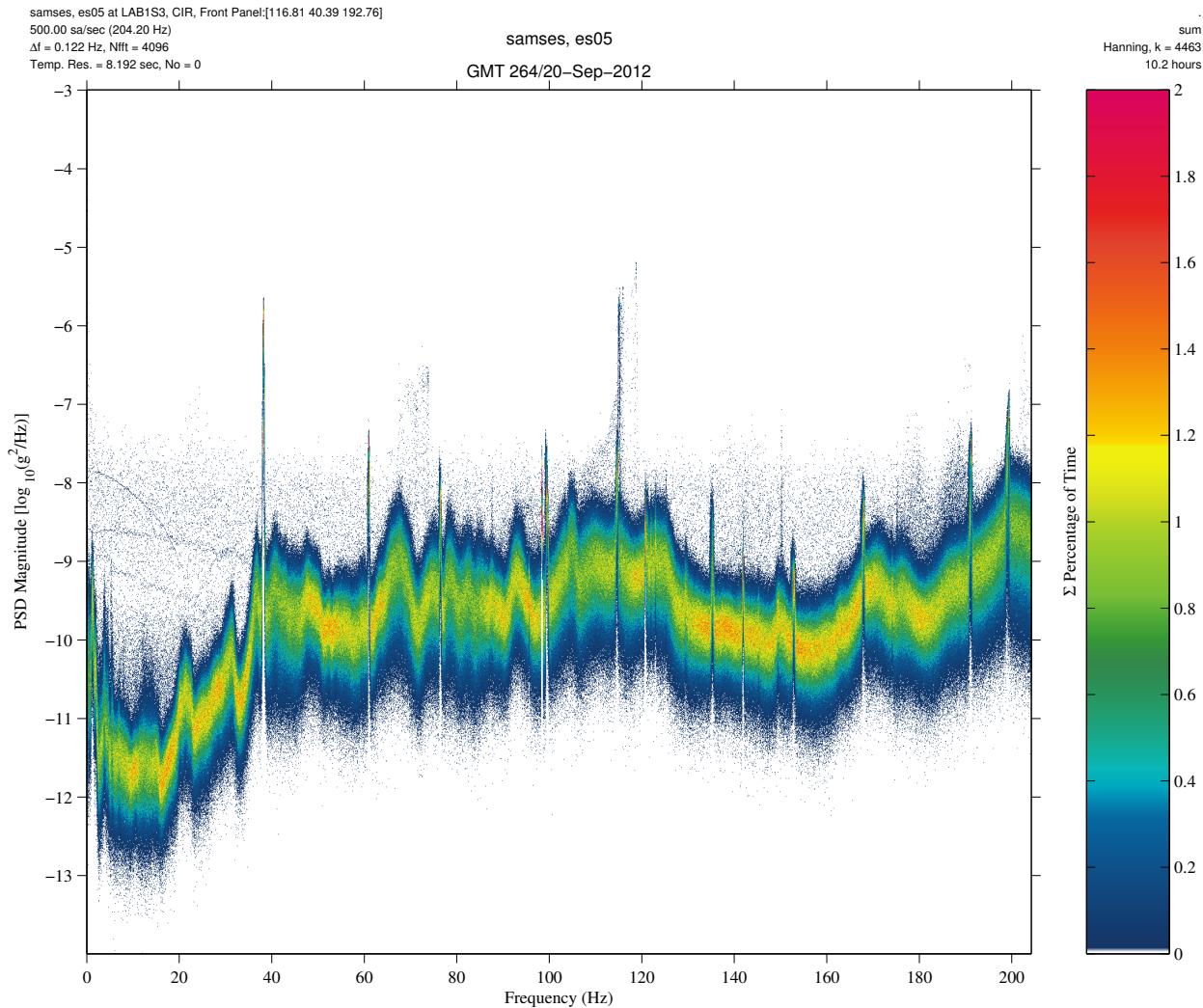
Notes:

- From the CIR Ops log, we know that this data set shows SAMS sensor measurements up to 200 Hz WITHOUT PaRIS.
- Note by comparing among first 4 pages of this PDF that there is spectral contrast below about 30 Hz or so.

Regime:	Vibratory
Category:	Equipment
Source:	PaRIS



Passive Rack Isolation System (PaRIS) Qualify



Description	
Sensor	es05 500.00 sa/sec (204.2 Hz)
Location	LAB1S3, CIR, Front Panel
Plot Type	PCSA (Σ)

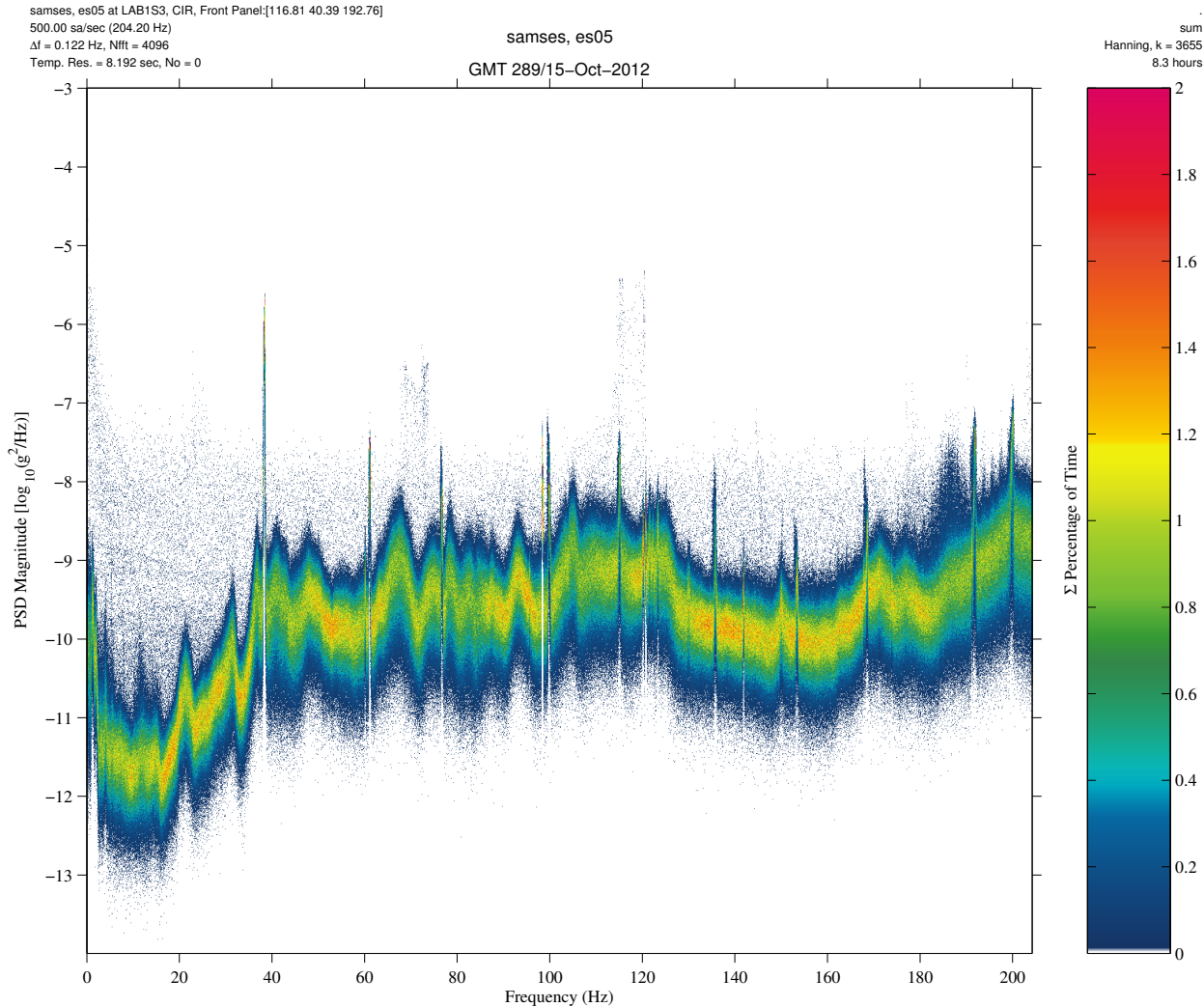
Notes:

- From the CIR Ops log, we know that this data set shows SAMS sensor measurements up to 200 Hz WITH PaRIS.
- Note by comparing among first 4 pages of this PDF that there is spectral contrast below about 30 Hz or so.

Regime:	Vibratory
Category:	Equipment
Source:	PaRIS



Passive Rack Isolation System (PaRIS) Qualify



Description	
Sensor	es05 500.00 sa/sec (204.2 Hz)
Location	LAB1S3, CIR, Front Panel
Plot Type	PCSA (Σ)

Notes:

- From the CIR Ops log, we know that this data set shows SAMS sensor measurements up to 200 Hz WITH PaRIS.
- Note by comparing among first 4 pages of this PDF that there is spectral contrast below about 30 Hz or so.

Regime:	Vibratory
Category:	Equipment
Source:	PaRIS



Passive Rack Isolation System (PaRIS) Quantify

CIR Ops			ugRMS	
GMT start	GMT stop	PaRIS used?	1 < f < 30 Hz	30 < f < 200 Hz
30-Oct-2012/07:08	30-Oct-2012/17:13	no	49.97	585.24
05-Nov-2012/12:02	05-Nov-2012/22:13	no	47.78	573.90
20-Sep-2012/10:50	20-Sep-2012/22:00	yes	21.14	625.68
15-Oct-2012/13:16	15-Oct-2012/23:20	yes	24.13	579.66

Description	
Sensor	es05 500.00 sa/sec (204.2 Hz)
Location	LAB1S3, CIR, Front Panel
Data Type	RMS statistics

Notes:

- From the CIR Ops log, we have 2 days of ops without PaRIS and 2 days with PaRIS.
- Note from the table shown here that RMS values computed from measurements made by the SAMS sensor mounted on the CIR that across those 4 days we see that below about 30 Hz is where PaRIS is most effective. Between about 1 Hz and 30 Hz, the PaRIS gives RMS attenuation by a factor of about 2.

Regime:	Vibratory
Category:	Equipment
Source:	PaRIS

